



V6

Active Subwoofer

Technical Specifications



- Extremely high output subwoofer for the largest rooms
- V6™ Power:
 - Six 10 inch professional audio long-throw drivers with 65mm (2.5 inch) voice coils
- 3,600W of amplification using external Procella DA-06DSP power amplifiers (2)
- Maximum output 133 dB @ 50Hz continuous with 137 dB peak output
- -3 dB point 18 Hz
- High sensitivity: 99 dB 1m/1W
- Push-pull driver configuration cancels even-order harmonic distortion
- Three inputs: one for each pair of drivers
- Sealed-box design with heavily internally-braced MDF cabinet
- Shallow cabinet depth at 14.2 inches/360mm

Frequency Response

-3 dB 18 Hz

Maximum SPL

@ 50 Hz 133 dB continuous
137 dB peak

Components

Procella V6™ configuration:
Six Long-throw 10 inch woofers with
65mm (2.5 inch) voice coils in 150
litre sealed box

Impedance

3 inputs; 6 ohms nominal each input

Power Handling

700 watts per input minimum
> 4KW maximum total

Sensitivity

99 dB 1m/1W

Amplification

Two external Procella DA-06DSP
power amplifiers

Connectivity

3 pair heavy-duty gold-plated
binding posts

Construction

Void-free MDF; internally cross-braced

Finish

Black studio vinyl with fabric grille

Dimensions

HxWxD 41.7" x 20.9" x 14.2"
1060 x 530 x 360 mm

Shipping Carton

HxWxD 47.25" x 27.6" x 19.7"
1200 x 700 x 500 mm

Net weight

178.6 Lbs / 81.0 Kg

Shipping weight

187.4 Lbs / 85.0 Kg

Included

Damper feet, installation guide

Assembly

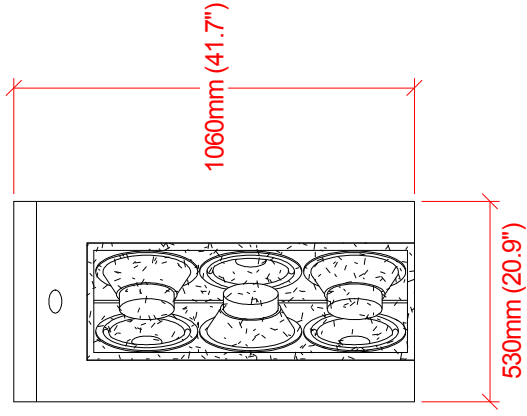
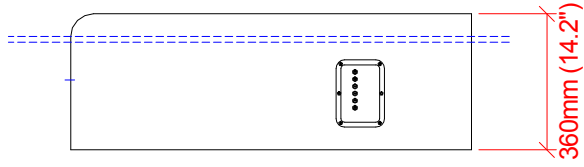
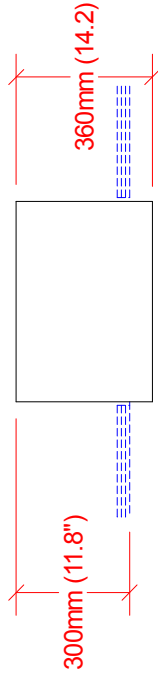
Sweden; 100% QC testing

contact@procella-audio.com



www.procella-audio.com

V6



Baffle wall cut-out = 1'120mm x 550mm (44"x22")
Weight = 81Kg

Procella V6
External dimensions
Anders Uggeberg 5/3 - 14
UPD:
V6_ext_dim.CAD
Scale 1:20 (PDF/JPG-file not to scale)